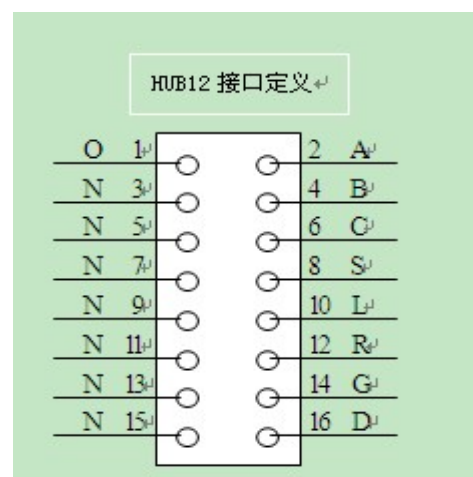




## P10 16\*32-1R-FS Outdoor LED Module



➤ **Interface Description**



## P10 16\*32-1R-FS Outdoor LED Module

➤ **Electrical and optical characteristics (Ta = 25°C)**

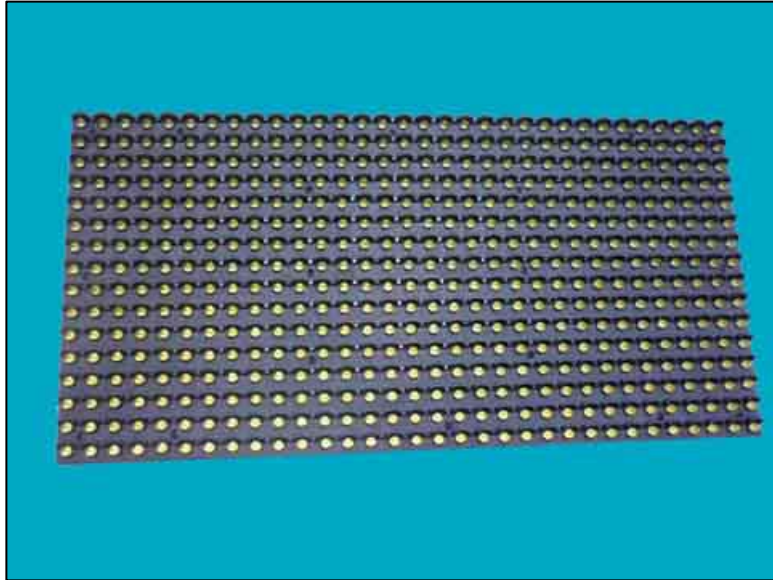
Color	Vf(V)		Reverse Current Ir (uA)	λ p(nm) Typ.	Iv(mcd)		Viewing Angle 2 θ 1/2(°)
	Typ.	Max.			Typ.	Max.	
Red	1.95	2.2	50	625	300	400	110/40
Test Condition	If=20mA		5V	If=20mA	If=20mA		If=20mA

➤ **Technical parameter**

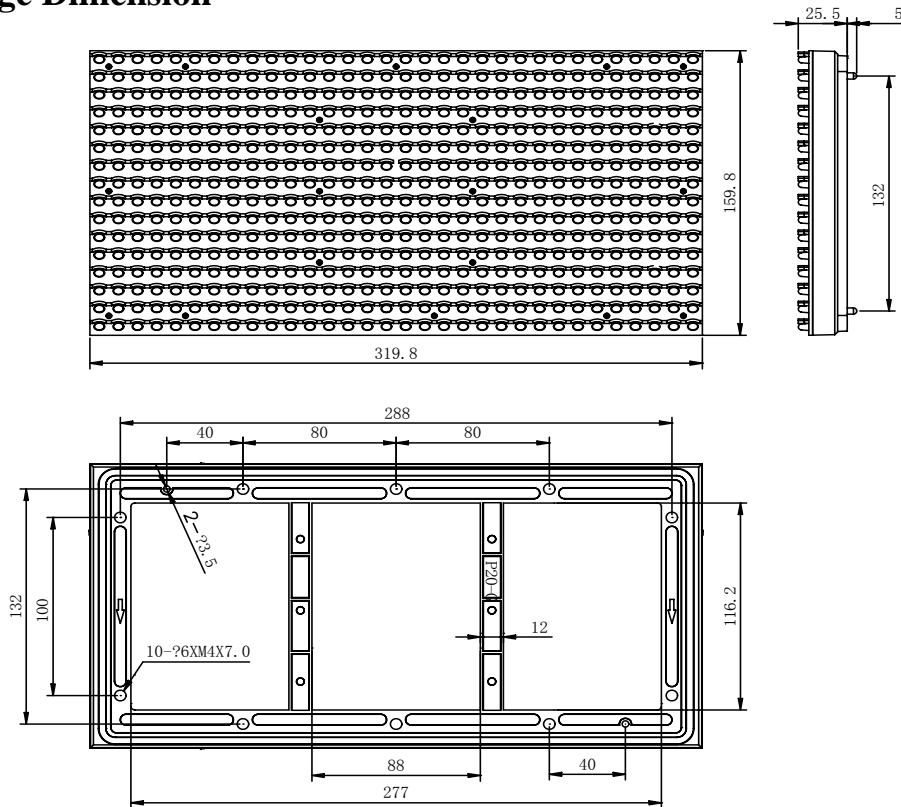
Description	Technical parameter		
Unit module	PCB	2 layers	
	Module size	320mm(W)*160mm(H)	
	Pixel pitch	10 mm	
	pixels Density	10,000 dots/m <sup>2</sup>	
	Pixel configuration	1 Red	
	LED specification	Yellow 12mil, 3.8mm X 5.2mm elliptical	
	View angle	110°(H) /45°(V)	
	Pixel per module	32 (W)*16 (H) dots	
	Max Power consumption	22 w (with resistance for circuit protection)	
	Weight	0.9 kg	
	Power port	2P U-terminal	
	Signal interface	HUB 12	
Control system	PC	Pentium 4 or above	
	Operating system	WIN 98/2000/NT/XP	
	control method	synchronous/asynchronous display	
Main Technical Parameter	Driving device	Constant Voltage	
	Drive type	1/4 scan	
	Refresh frequency	≥ 120Hz/s	
	MTBF	≥9,000 hours	
	Life span	≥40,000 hours	
	Flatness	Tolerance of pixel pitch ≤0.3mm	
		Tolerance of modules between ≤1.2mm	
	Display Mode	800*600; 1024*768	
Communication distance	no less than 100 meters (UTP-5 cable)		

## P10 16\*32-1Y-FS Outdoor LED Module

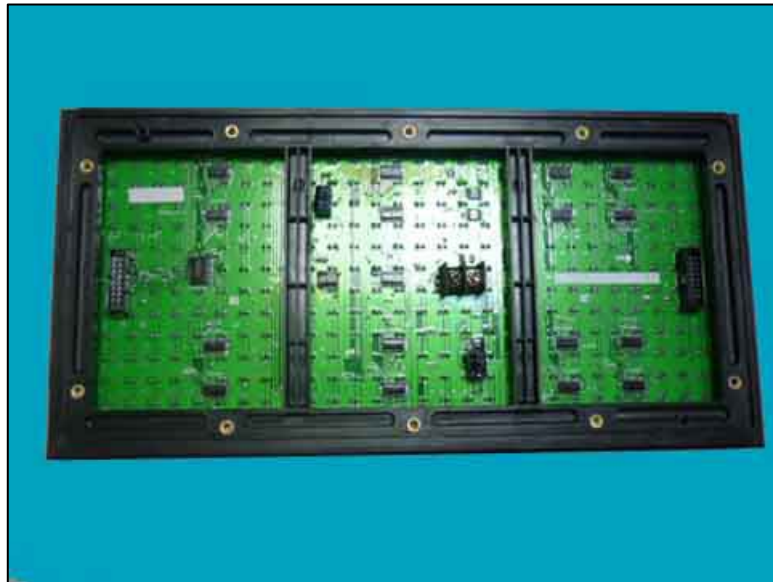
REV. : 12-09



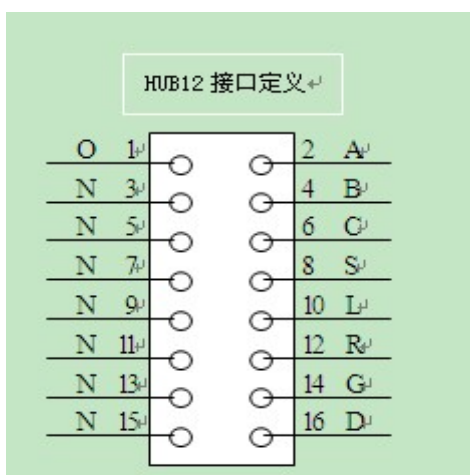
### ➤ Package Dimension



## P10 16\*32-1Y-FS Outdoor LED Module



### ➤ Interface Description



## P10 16\*32-1Y-FS Outdoor LED Module

➤ **Electrical and optical characteristics (Ta = 25°C)**

Color	Vf(V)		Reverse Current Ir (uA)	λ p(nm) Typ.	Iv(mcd)		Viewing Angle 2 θ 1/2(°)
	Typ.	Max.			Typ.	Max.	
Yellow	1.95	2.2	50	590	900	1200	110/45
Test Condition	If=20mA		5V	If=20mA	If=20mA		If=20mA

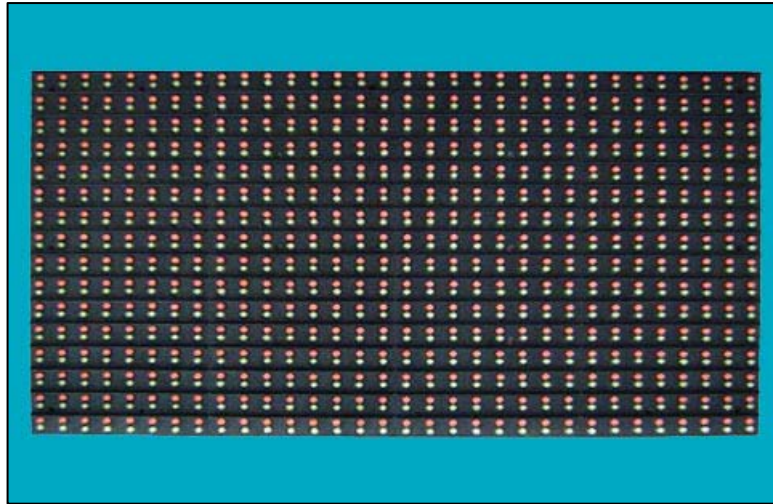
➤ **Technical parameter**

Description	Technical parameter		
Unit module	PCB	2 layers	
	Module size	320mm(W)*160mm(H)	
	Pixel pitch	10 mm	
	pixels Density	10,000 dots/m <sup>2</sup>	
	Pixel configuration	1 Yellow	
	LED specification	Yellow 12mil, 3.8mm X 5.2mm elliptical	
	View angle	110°(H) /45°(V)	
	Pixel per module	32 (W)*16 (H) dots	
	Max Power consumption	22 w (with resistance for circuit protection)	
	Weight	0.9 kg	
	Power port	2P U-terminal	
	Signal interface	HUB 12	
Control system	PC	Pentium 4 or above	
	Operating system	WIN 98/2000/NT/XP	
	control method	synchronous/asynchronous display	
Main Technical Parameter	Driving device	Constant Voltage	
	Drive type	1/4 scan	
	Refresh frequency	≥ 120Hz/s	
	MTBF	≥9,000 hours	
	Life span	≥40,000 hours	
	Flatness	Tolerance of pixel pitch ≤0.3mm	
		Tolerance of modules between ≤1.2mm	
	Display Mode	800*600; 1024*768	
Communication distance	no less than 100 meters (UTP-5 cable)		

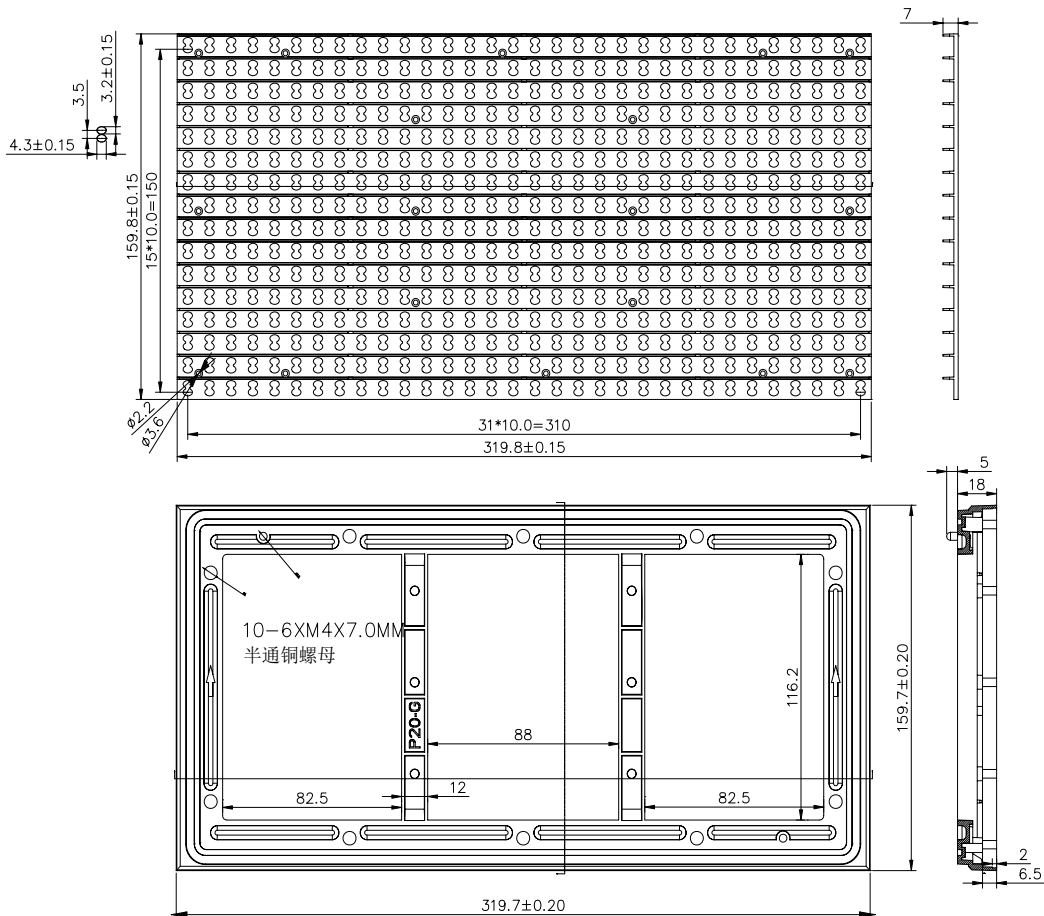


## P10 16\*32-1R1G-FS Outdoor LED Module

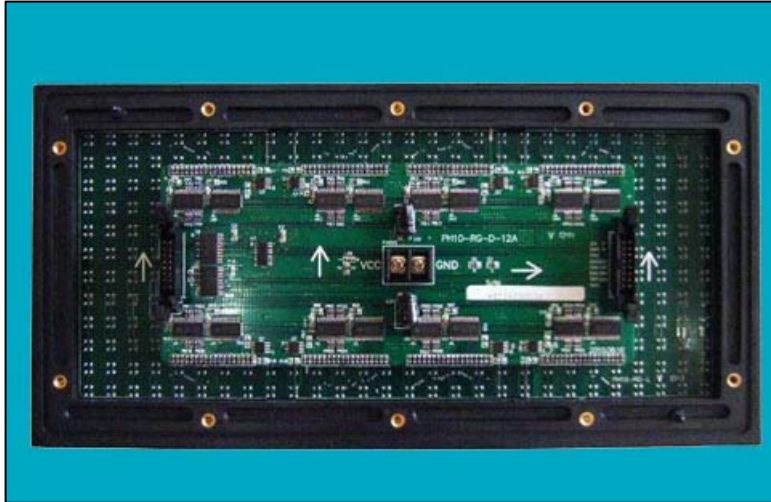
REV. : 12-04



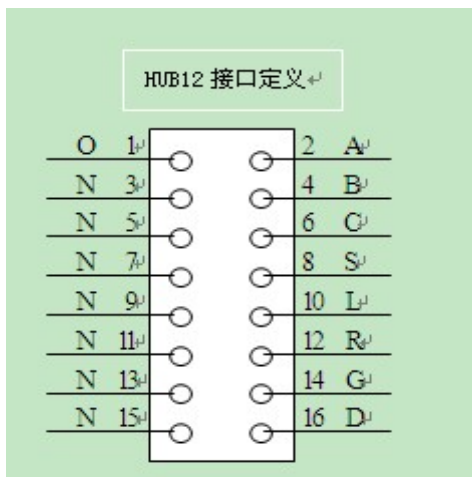
### ➤ Package Dimension



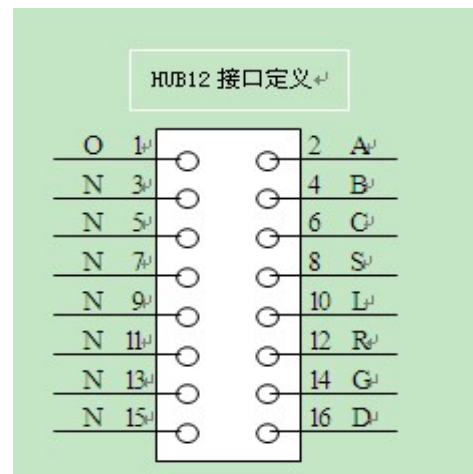
## P10 16\*32-1R1G-FS Outdoor LED Module



➤ **Interface Description**



INPUT



OUTPUT



## P10 16\*32-1R1G-FS Outdoor LED Module

➤ **Electrical and optical characteristics (Ta = 25°C)**

Color	Vf(V)		Reverse Current Ir (uA)	λ p(nm) Typ.	Iv(mcd)		Viewing Angle 2 θ 1/2(°)
	Typ.	Max.			Typ.	Max.	
Red	1.95	2.4	50	625	900	1200	110/45
Green	3.0	3.3	50	525	1600	2000	110/45
Test Condition	If=20mA		5V	If=20mA	If=20mA		If=20mA

➤ **Technical parameter**

Description	Technical parameter		
Unit module	PCB	Detached light/driver	
	Module size	320mm(W)*160mm(H)	
	Pixel pitch	10 mm	
	Pixels Density	10,000 dots/m <sup>2</sup>	
	Pixel configuration	1 Red & 1 Green	
	LED specification	3.8mm X 5.2mm elliptical	
	View angle	110°(H) /45°(V)	
	Pixel per module	32 (W)*16 (H) dots	
	Max Power consumption	25 w (with resistance for circuit protection)	
	Weight	0.9 kg	
	Power port	2P U-terminal	
Signal interface	HUB 12		
Control system	PC	Pentium 4 or above	
	Operating system	WIN 98/2000/NT/XP	
	control method	synchronous/asynchronous display	
Main Technical Parameter	Driving device	Constant Voltage	
	Drive type	1/4 scan	
	Refresh frequency	≥ 120Hz/s	
	MTBF	≥ 9,000 hours	
	Life span	≥ 40,000 hours	
	Flatness	Tolerance of pixel pitch ≤ 0.3mm	
		Tolerance of modules between ≤ 1.2mm	
	Display Mode	800*600; 1024*768	
	Communication distance	no less than 100 meters (UTP-5 cable)	