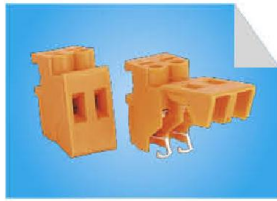


# Transformer Terminal Block

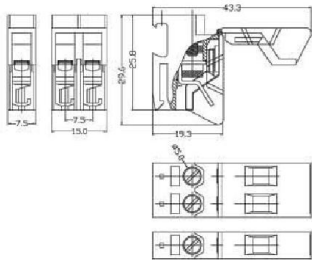
## XY260



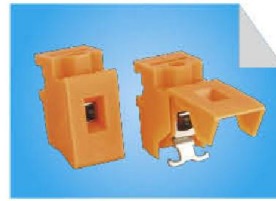
<b>Dimensions</b>		
Poles:	1P/2P	
Pitch:	7.5mm(.295")	
<b>Electrical</b>		
Standard:	UL	IEC
Voltage Rating:	300V	750V
Current Rating:	20A	32A
Wire range:	20-10AWG 0.5-4mm <sup>2</sup>	
Withstanding voltage	AC3000V/Min	

<b>Mechanical</b>		
Torque:	0.8N.m(7.0Lb-In.)	
Ambient temperature	-40°C~+105°C	
Strip length	10-12mm	

<b>Material</b>		
Housing:	PA66(UL 94V-0)	
Contact:	Brass,Tin Plated	
Wire Cage:	Brass,Nickel Plated	
Screw:	M3.5,steel,Cr3+ Zn plated	



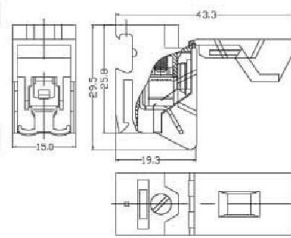
## XY261



<b>Dimensions</b>		
Poles:	1P	
Pitch:	15mm(.591")	
<b>Electrical</b>		
Standard:	UL	IEC
Voltage Rating:	300V	750V
Current Rating:	20A	41A
Wire range:	20-10AWG 0.5-6mm <sup>2</sup>	
Withstanding voltage	AC3000V/Min	

<b>Mechanical</b>		
Torque:	1.2N.m(10.5Lb-In.)	
Ambient temperature	-40°C~+105°C	
Strip length	10-12mm	

<b>Material</b>		
Housing:	PA66(UL 94V-0)	
Contact:	Brass,Tin Plated	
Wire Cage:	Brass,Nickel Plated	
Screw:	M4,steel,Cr3+ Zn plated	



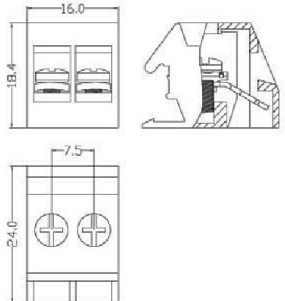
## XY262



<b>Dimensions</b>		
Poles:	2P/3P	
Pitch:	7.5MM(.295")	
<b>Electrical</b>		
Standard:	UL	IEC
Voltage Rating:	300V	250V
Current Rating:	10A	24A
Wire range:	24-14AWG 0.5-2.5mm <sup>2</sup>	
Withstanding voltage	AC2000V/Min	

<b>Mechanical</b>		
Torque:	0.5N.m(4.4Lb-In.)	
Ambient temperature	-40°C~+105°C	
Strip length	8-10mm	

<b>Material</b>		
Housing:	PA66(UL 94V-0)	
Contact:	Brass,Tin Plated	
Screw:	M3,steel,Cr3+ Zn plated	



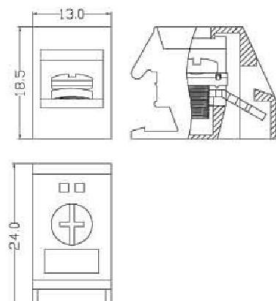
## XY263



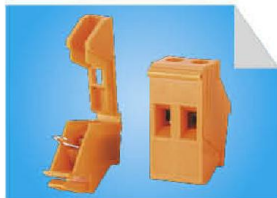
<b>Dimensions</b>		
Poles:	1P	
Pitch:	13.0mm(.512")	
<b>Electrical</b>		
Standard:	UL	IEC
Voltage Rating:	300V	250V
Current Rating:	20A	32A
Wire range:	20-12AWG 0.75-4mm <sup>2</sup>	
Withstanding voltage	AC2000V/Min	

<b>Mechanical</b>		
Torque:	1.2N.m(10.5Lb-In.)	
Ambient temperature	-40°C~+105°C	
Strip length	8-10mm	

<b>Material</b>		
Housing:	PA66(UL 94V-0)	
Contact:	Brass,Tin Plated	
Screw:	M4,steel,Cr3+ Zn plated	



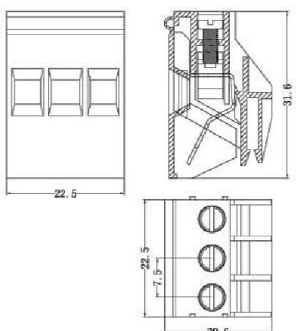
## XY264



<b>Dimensions</b>		
Poles:	1-3P	
Pitch:	7.5MM(.295")	
<b>Electrical</b>		
Standard:	UL	IEC
Voltage Rating:	600V	450V
Current Rating:	30A	32A
Wire range:	20-10AWG 0.5-4mm <sup>2</sup>	
Withstanding voltage	AC2500V/Min	

<b>Mechanical</b>		
Torque:	0.5N.m(4.4Lb-In.)	
Ambient temperature	-40°C~+105°C	
Strip length	10-12mm	

<b>Material</b>		
Housing:	PA66(UL 94V-0)	
Contact:	Brass,Tin Plated	
Wire Cage:	Brass,Nickel Plated	
Screw:	M3,steel,Cr3+ Zn plated	



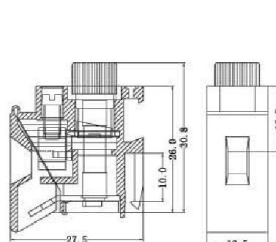
## XY265



<b>Dimensions</b>		
Poles:	1P	
Pitch:	12.5mm(.492")	
<b>Electrical</b>		
Standard:	UL	IEC
Voltage Rating:	300V	250V
Current Rating:	10A	10A
Wire range:	20-10AWG 0.5-4mm <sup>2</sup>	
Withstanding voltage	AC2000V/Min	

<b>Mechanical</b>		
Torque:	0.8N.m(7.0Lb-In.)	
Ambient temperature	-40°C~+105°C	
Strip length	10-12mm	

<b>Material</b>		
Housing:	PA66(UL 94V-0)	
Contact:	Brass,Tin Plated	
Wire Cage:	Brass,Nickel Plated	
Screw:	M3.5,steel,Cr3+ Zn plated	



## XY266

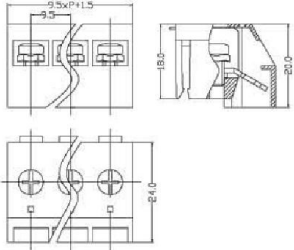


<b>Dimensions</b>	
Poles:	2P/3P
Pitch:	9.5mm(.374")

<b>Electrical</b>	
Standard:	UL IEC
Voltage Rating:	600V 250V
Current Rating:	10A 24A
Wire range:	20-12AWG 0.5-2.5mm <sup>2</sup>
Withstanding voltage	AC2000V/Min

<b>Mechanical</b>	
Torque:	0.8N.m(7.0Lb-In.)
Ambient temperature	-40°C~+105°C
Strip length	8-10mm

<b>Material</b>	
Housing:	PA66(UL 94V-0)
Contact:	Brass, Tin Plated
Screw:	M3.5, steel, Cr3+ Zn plated



## XY267

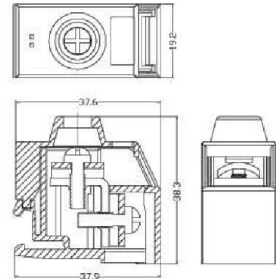


<b>Dimensions</b>	
Poles:	1P
Pitch:	19.0mm(.748")

<b>Electrical</b>	
Standard:	UL IEC
Voltage Rating:	300V 750V
Current Rating:	55A 57A
Wire range:	12-6AWG 4-10mm <sup>2</sup>
Withstanding voltage	AC3000V/Min

<b>Mechanical</b>	
Torque:	2.0N.m(17.5Lb-In.)
Ambient temperature	-40°C~+105°C
Strip length	8-10mm

<b>Material</b>	
Housing:	PA66(UL 94V-0)
Contact:	Copper, Tin plated
Screw:	M5, steel, Cr3+ Zn plated



## XY268

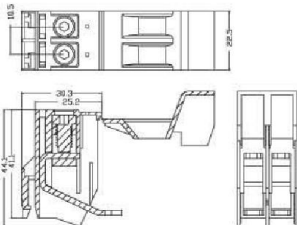


<b>Dimensions</b>	
Poles:	2P
Pitch:	10.5mm(.413")

<b>Electrical</b>	
Standard:	UL IEC
Voltage Rating:	300V 750V
Current Rating:	55A 57A
Wire range:	12-6AWG 4-10mm <sup>2</sup>
Withstanding voltage	AC3000V/Min

<b>Mechanical</b>	
Torque:	2.0N.m(17.5Lb-In.)
Ambient temperature	-40°C~+105°C
Strip length	10-12mm

<b>Material</b>	
Housing:	PA66(UL 94V-0)
Contact:	Copper, Tin plated
Wire Cage:	Brass, Nickel Plated
Screw:	M5, steel, Cr3+ Zn plated



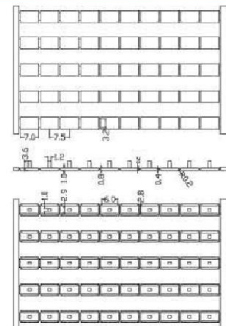
## XYTSZB4



<b>Dimensions</b>	
Poles:	10P
Pitch:	7.5mm(.295")

<b>Mechanical</b>	
Ambient temperature	-40°C~+105°C

<b>Material</b>	
Housing:	PA66(UL 94V-0)



## XYTZB4



<b>Dimensions</b>	
Poles:	10P
Pitch:	7.5mm(.295")

<b>Mechanical</b>	
Ambient temperature	-40°C~+105°C

<b>Material</b>	
Housing:	PA66(UL 94V-0)

