

# Plug-in Terminal Block

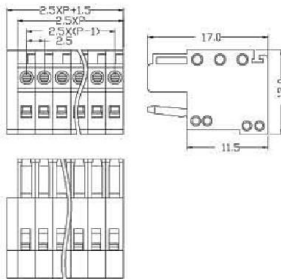
## XY2505F-2.5



<b>Dimensions</b>		
Poles:	2P-12P	
Pitch:	2.5mm(.098")	
<b>Electrical</b>		
Standard:	UL	IEC
Voltage Rating:	150V	130V
Current Rating:	4A	6A
Wire range:	28-20AWG 0.2-0.5mm <sup>2</sup>	
Withstand voltage	AC1250V/Min	

<b>Mechanical</b>		
Ambient temperature	-40°C~+105°C	
Strip length	5-6mm	

<b>Material</b>		
Housing:	PA66(UL 94V-0)	
Wire guard:	Stainless steel	
Contact:	Phosphor Bronze, Tin Plated	



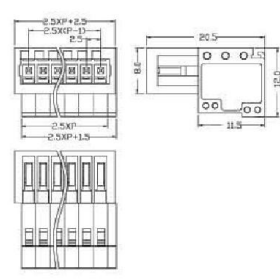
## XY2505FR-2.5



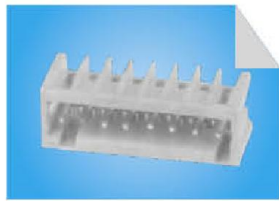
<b>Dimensions</b>		
Poles:	2P-12P	
Pitch:	2.5mm(.098")	
<b>Electrical</b>		
Standard:	UL	IEC
Voltage Rating:	150V	130V
Current Rating:	4A	6A
Wire range:	28-20AWG 0.5mm <sup>2</sup>	
Withstand voltage	AC1250V/Min	

<b>Mechanical</b>		
Ambient temperature	-40°C~+105°C	
Strip length	5-6mm	

<b>Material</b>		
Housing:	PA66(UL 94V-0)	
Wire guard:	Stainless steel	
Solder:	Red Copper, Nickel Plated	



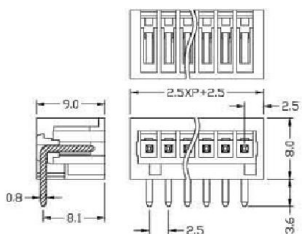
## XY2505RC-2.5



<b>Dimensions</b>		
Poles:	2P-12P	
Pitch:	2.5mm(.098")	
<b>Electrical</b>		
Standard:	UL	IEC
Voltage Rating:	150V	130V
Current Rating:	4A	6A
Withstand voltage	AC1250V/Min	

<b>Mechanical</b>		
Ambient temperature	-40°C~+105°C	

<b>Material</b>		
Housing:	PA66(UL 94V-0)	
Pin header:	Brass, Tin Plated	



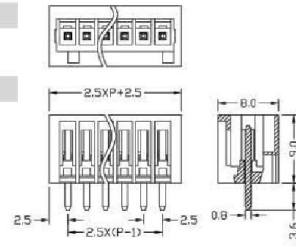
## XY2505VC-2.5



<b>Dimensions</b>		
Poles:	2P-12P	
Pitch:	2.5mm(.098")	
<b>Electrical</b>		
Standard:	UL	IEC
Voltage Rating:	150V	130V
Current Rating:	4A	6A
Withstand voltage	AC1250V/Min	

<b>Mechanical</b>		
Ambient temperature	-40°C~+105°C	

<b>Material</b>		
Housing:	PA66(UL 94V-0)	
Pin header:	Brass, Tin Plated	



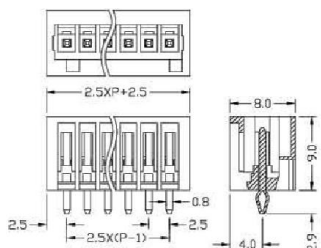
## XY2505VCP-2.5



<b>Dimensions</b>		
Poles:	2P-24P	
Pitch:	2.5mm(.098")	
<b>Electrical</b>		
Standard:	UL	IEC
Voltage Rating:	150V	130V
Current Rating:	4A	6A
Withstand voltage	AC1250V/Min	

<b>Mechanical</b>		
Ambient temperature	-40°C~+105°C	

<b>Material</b>		
Housing:	PA66(UL 94V-0)	
Pin header:	Brass, Tin Plated	



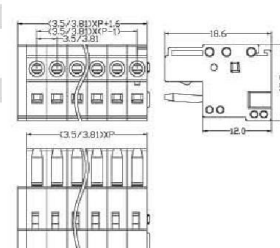
## XY2505F-3.5 XY2505F-3.81



<b>Dimensions</b>		
Poles:	2P-24P	
Pitch:	3.5mm(.138") 3.81mm(.150")	
<b>Electrical</b>		
Standard:	UL	IEC
Voltage Rating:	300V	130V
Current Rating:	10A	10A
Wire range:	28-14AWG 0.2-1.5mm <sup>2</sup>	
Withstand voltage	AC1250V/Min	

<b>Mechanical</b>		
Ambient temperature	-40°C~+105°C	
Strip length	6-7mm	

<b>Material</b>		
Housing:	PA66(UL 94V-0)	
Wire guard:	Stainless steel	
Contact:	Phosphor Bronze, Nickel Plated	



## XY2505FG-3.5 XY2505FG-3.81

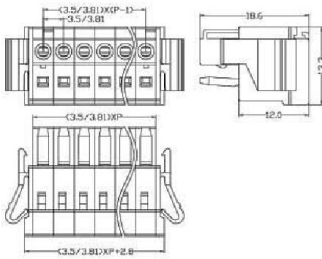


<b>Dimensions</b>		
Poles:	2P-24P	
Pitch:	3.5mm(.138") 3.81mm(.150")	

<b>Electrical</b>		
Standard:	UL	IEC
Voltage Rating:	300V	130V
Current Rating:	10A	10A
Wire range:	28-14AWG 0.2-1.5mm <sup>2</sup>	
Withstand voltage	AC1250V/Min	

<b>Mechanical</b>	
Ambient temperature	-40°C~+105°C
Strip length	6-7mm

<b>Material</b>	
Housing:	PA66(UL 94V-0)
Wire guard:	Stainless steel
Contact:	Phosphor Bronze,Nickel Plated



## XY2505FR-3.5 XY2505FR-3.81

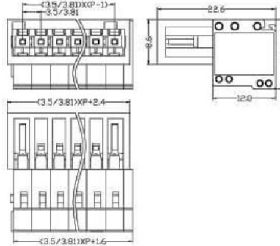


<b>Dimensions</b>		
Poles:	2P-24P	
Pitch:	3.5mm(.138") 3.81mm(.150")	

<b>Electrical</b>		
Standard:	UL	IEC
Voltage Rating:	300V	250V
Current Rating:	8A	10A
Wire range:	28-14AWG 1.5mm <sup>2</sup>	
Withstand voltage	AC2000V/Min	

<b>Mechanical</b>	
Ambient temperature	-40°C~+105°C
Strip length	6-7mm

<b>Material</b>	
Housing:	PA66(UL 94V-0)
Wire guard:	Stainless steel
Solder:	Red Copper, Nickel Plated



## XY2505FRM-3.5 XY2505FRM-3.81

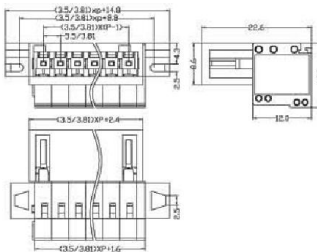


<b>Dimensions</b>		
Poles:	2P-24P	
Pitch:	3.5mm(.138") 3.81mm(.150")	

<b>Electrical</b>		
Standard:	UL	IEC
Voltage Rating:	300V	130V
Current Rating:	10A	10A
Wire range:	28-14AWG 0.2-1.5mm <sup>2</sup>	
Withstand voltage	AC1250V/Min	

<b>Mechanical</b>	
Ambient temperature	-40°C~+105°C
Strip length	6-7mm

<b>Material</b>	
Housing:	PA66(UL 94V-0)
Wire guard:	Stainless steel
Contact:	Red Copper, Nickel Plated



## XY2505RC-3.5 XY2505RC-3.81

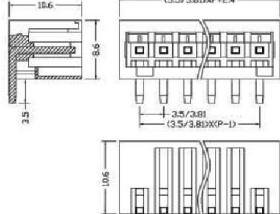


<b>Dimensions</b>		
Poles:	2P-24P	
Pitch:	3.5mm(.138") 3.81mm(.150")	

<b>Electrical</b>		
Standard:	UL	IEC
Voltage Rating:	300V	130V
Current Rating:	10A	10A
Withstand voltage	AC2000V/1Min	

<b>Mechanical</b>	
Ambient temperature	-40°C~+105°C

<b>Material</b>	
Housing:	PA66(UL 94V-0)
Wire guard:	Brass, Tin Plated



## XY2505VC-3.5 XY2505VC-3.81

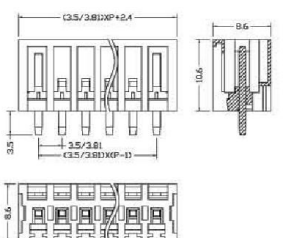


<b>Dimensions</b>		
Poles:	2P-24P	
Pitch:	3.5mm(.138") 3.81mm(.150")	

<b>Electrical</b>		
Standard:	UL	IEC
Voltage Rating:	300V	130V
Current Rating:	10A	10A
Withstand voltage	AC2000V/1Min	

<b>Mechanical</b>	
Ambient temperature	-40°C~+105°C

<b>Material</b>	
Housing:	PA66(UL 94V-0)
Pin header:	Brass, Tin Plated



## XY2505VCP-3.5 XY2505VCP-3.81

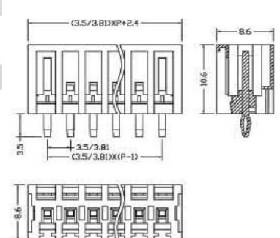


<b>Dimensions</b>		
Poles:	2P-24P	
Pitch:	3.5mm(.138") 3.81mm(.150")	

<b>Electrical</b>		
Standard:	UL	IEC
Voltage Rating:	300V	130V
Current Rating:	10A	10A
Withstand voltage	AC2000V/1Min	

<b>Mechanical</b>	
Ambient temperature	-40°C~+105°C

<b>Material</b>	
Housing:	PA66(UL 94V-0)
Wire guard:	Brass, Tin Plated





# Plug-in Terminal Block

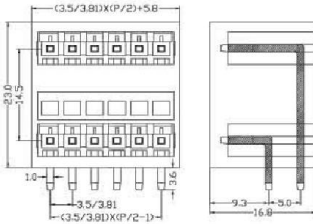
## XY2505RH-3.5 XY2505RH-3.81



<b>Dimensions</b>		
Poles:	2*(2P-24P)	
Pitch:	3.5mm(.138") 3.81mm(.150")	
<b>Electrical</b>		
Standard:	UL	IEC
Voltage Rating:	300V	250V
Current Rating:	8A	10A
Withstand voltage	AC2000V/Min	

<b>Mechanical</b>		
Ambient temperature	-40°C~+105°C	

<b>Material</b>		
Housing:	PA66(UL 94V-0)	
Pin header:	Red Copper, Nickel Plated	



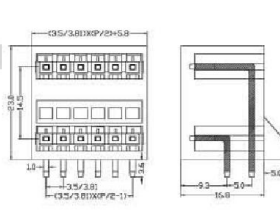
## XY2505RHB-3.5 XY2505RHB-3.81



<b>Dimensions</b>		
Poles:	2*(2P-24P)	
Pitch:	3.5mm(.138") 3.81mm(.150")	
<b>Electrical</b>		
Standard:	UL	IEC
Voltage Rating:	300V	250V
Current Rating:	8A	10A
Withstand voltage	AC2000V/Min	

<b>Mechanical</b>		
Ambient temperature	-40°C~+105°C	

<b>Material</b>		
Housing:	PA66(UL 94V-0)	
Pin header:	Red Copper, Nickel Plated	



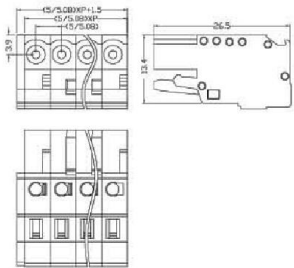
## XY2505F-5.0 XY2505F-5.08



<b>Dimensions</b>		
Poles:	(2P-24P)	
Pitch:	5.0mm(.197") 5.08mm(.200")	
<b>Electrical</b>		
Standard:	UL	IEC
Voltage Rating:	300V	320V
Current Rating:	15A	20A
Wire range:	22-14AWG 0.2-2.5mm <sup>2</sup>	
Withstand voltage	AC2500V/Min	

<b>Mechanical</b>		
Ambient temperature	-40°C~+105°C	
Strip length	7-8mm	

<b>Material</b>		
Housing:	PA66(UL 94V-0)	
Contact:	Phosphor Bronze	
Wire guard:	Stainless steel	



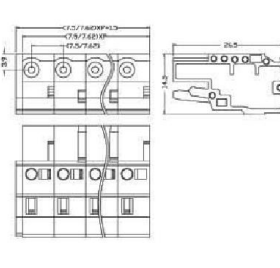
## XY2505F-7.5 XY2505F-7.62



<b>Dimensions</b>		
Poles:	(2P-12P)	
Pitch:	7.5mm(.295") 7.62mm(.300")	
<b>Electrical</b>		
Standard:	UL	IEC
Voltage Rating:	300V	400V
Current Rating:	15A	20A
Wire range:	22-14AWG 0.2-2.5mm <sup>2</sup>	
Withstand voltage	AC2500V/Min	

<b>Mechanical</b>		
Ambient temperature	-40°C~+105°C	
Strip length	7-8mm	

<b>Material</b>		
Housing:	PA66(UL 94V-0)	
Contact:	Phosphor Bronze	
Wire guard:	Stainless steel	



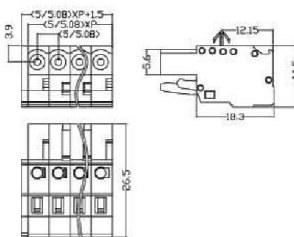
## XY2505FC-5.0 XY2505FC-5.08



<b>Dimensions</b>		
Poles:	(2P-24P)	
Pitch:	5.0mm(.197") 5.08mm(.200")	
<b>Electrical</b>		
Standard:	UL	IEC
Voltage Rating:	300V	320V
Current Rating:	15A	20A
Wire range:	22-14AWG 2.5mm <sup>2</sup>	
Withstand voltage	AC2500V/Min	

<b>Mechanical</b>		
Ambient temperature	-40°C~+105°C	
Strip length	7-8mm	

<b>Material</b>		
Housing:	PA66(UL 94V-0)	
Contact:	Phosphor Bronze	
Wire guard:	Stainless steel	



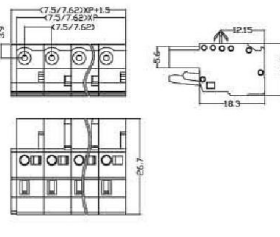
## XY2505FC-7.5 XY2505FC-7.62



<b>Dimensions</b>		
Poles:	(2P-12P)	
Pitch:	7.5mm(.295") 7.62mm(.300")	
<b>Electrical</b>		
Standard:	UL	IEC
Voltage Rating:	300V	320V
Current Rating:	15A	20A
Wire range:	22-14AWG 2.5mm <sup>2</sup>	
Withstand voltage	AC2500V/Min	

<b>Mechanical</b>		
Ambient temperature	-40°C~+105°C	
Strip length	7-8mm	

<b>Material</b>		
Housing:	PA66(UL 94V-0)	
Contact:	Phosphor Bronze	
Wire guard:	Stainless steel	



## XY2505FRMA-5.0 XY2505FRMA-5.08



<b>Dimensions</b>		
Poles:	(2P-22P)	
Pitch:	5.0mm(.197"), 5.08mm(.200")	

<b>Electrical</b>		
Standard:	UL	IEC
Voltage Rating:	300V	320V
Current Rating:	15A	20A
Wire range:	22-14AWG 2.5mm <sup>2</sup>	
Withstand voltage	AC2500V/Min	

<b>Mechanical</b>		
Ambient temperature	-40°C~+105°C	
Strip length	7-8mm	

<b>Material</b>		
Housing:	PA66(UL 94V-0)	
Contact:	Red copper	
Wire guard:	Stainless steel	

## XY2505FRMA-7.5 XY2505FRMA-7.62

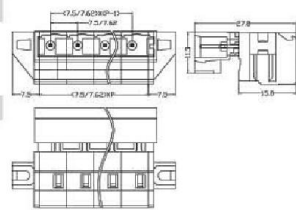
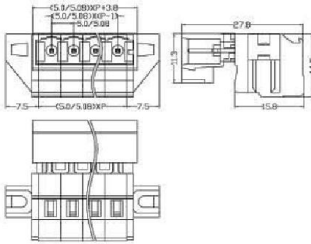


<b>Dimensions</b>		
Poles:	(2P-12P)	
Pitch:	7.5mm(.295") 7.62mm(.300")	

<b>Electrical</b>		
Standard:	UL	IEC
Voltage Rating:	300V	400V
Current Rating:	15A	20A
Wire range:	22-14AWG 2.5mm <sup>2</sup>	
Withstand voltage	AC2500V/Min	

<b>Mechanical</b>		
Ambient temperature	-40°C~+105°C	
Strip length	7-8mm	

<b>Material</b>		
Housing:	PA66(UL 94V-0)	
Contact:	Red copper	
Wire guard:	Stainless steel	



## XY2505FRMC-5.0 XY2505FRMC-5.08



<b>Dimensions</b>		
Poles:	(2P-24P)	
Pitch:	5.0mm(.197"), 5.08mm(.200")	

<b>Electrical</b>		
Standard:	UL	IEC
Voltage Rating:	300V	320V
Current Rating:	15A	20A
Wire range:	22-14AWG 2.5mm <sup>2</sup>	
Withstand voltage	AC2500V/Min	

<b>Mechanical</b>		
Ambient temperature	-40°C~+105°C	
Strip length	7-8mm	

<b>Material</b>		
Housing:	PA66(UL 94V-0)	
Contact:	Red copper	
Wire guard:	Stainless steel	

## XY2505FRMC-7.5 XY2505FRMC-7.62

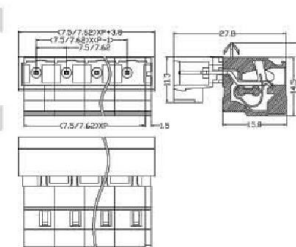
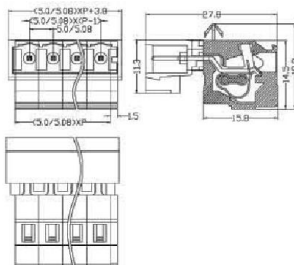


<b>Dimensions</b>		
Poles:	(2P-12P)	
Pitch:	7.5mm(.295") 7.62mm(.300")	

<b>Electrical</b>		
Standard:	UL	IEC
Voltage Rating:	300V	400V
Current Rating:	15A	20A
Wire range:	22-14AWG 2.5mm <sup>2</sup>	
Withstand voltage	AC2500V/Min	

<b>Mechanical</b>		
Ambient temperature	-40°C~+105°C	
Strip length	7-8mm	

<b>Material</b>		
Housing:	PA66(UL 94V-0)	
Contact:	Red copper	
Wire guard:	Stainless steel	



## XY2505RC-7.5 XY2505RC-7.62



<b>Dimensions</b>		
Poles:	(2P-12P)	
Pitch:	7.5mm(.295") 7.62mm(.300")	

<b>Electrical</b>		
Standard:	UL	IEC
Voltage Rating:	300V	400V
Current Rating:	15A	20A
Withstand voltage	AC2500V/Min	

<b>Mechanical</b>		
Ambient temperature	-40°C~+105°C	

<b>Material</b>		
Housing:	PA66(UL 94V-0)	
Pin header:	Red copper, Tin Plated	

## XY2505RC-5.0 XY2505RC-5.08

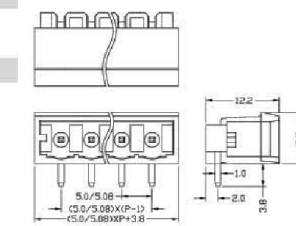
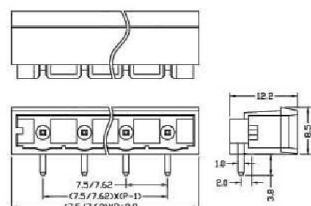


<b>Dimensions</b>		
Poles:	(2P-24P)	
Pitch:	5.0mm(.197"), 5.08mm(.200")	

<b>Electrical</b>		
Standard:	UL	IEC
Voltage Rating:	300V	320V
Current Rating:	15A	20A
Withstand voltage	AC2500V/Min	

<b>Mechanical</b>		
Ambient temperature	-40°C~+105°C	

<b>Material</b>		
Housing:	PA66(UL 94V-0)	
Pin header:	Red copper, Tin Plated	





# Plug-in Terminal Block

## XY2505FGB-5.0 XY2505FGB-5.08

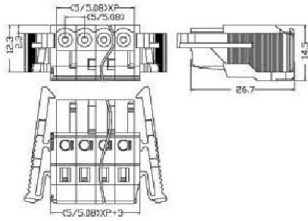


<b>Dimensions</b>		
Poles:	(2P-24P)	
Pitch:	5.0mm(.197"), 5.08mm(.200")	

<b>Electrical</b>		
Standard:	UL	IEC
Voltage Rating:	300V	320V
Current Rating:	15A	20A
Wire range:	22-14AWG 2.5mm <sup>2</sup>	
Withstand voltage	AC2500V/Min	

<b>Mechanical</b>		
Ambient temperature	-40°C~+105°C	
Strip length	7-8mm	

<b>Material</b>		
Housing:	PA66(UL 94V-0)	
Contact:	Phosphor Bronze	
Wire guard:	Stainless steel	



## XY2505FGB-7.5 XY2505FGB-7.62

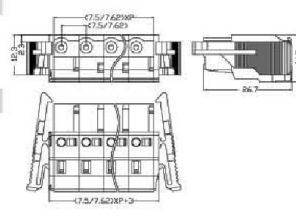


<b>Dimensions</b>		
Poles:	(2P-12P)	
Pitch:	7.5mm(.295") 7.62mm(.300")	

<b>Electrical</b>		
Standard:	UL	IEC
Voltage Rating:	300V	400V
Current Rating:	15A	20A
Wire range:	22-14AWG 2.5mm <sup>2</sup>	
Withstand voltage	AC2500V/Min	

<b>Mechanical</b>		
Ambient temperature	-40°C~+105°C	
Strip length	7-8mm	

<b>Material</b>		
Housing:	PA66(UL 94V-0)	
Contact:	Phosphor Bronze	
Wire guard:	Stainless steel	



## XY2505FG-5.0 XY2505FG-5.08

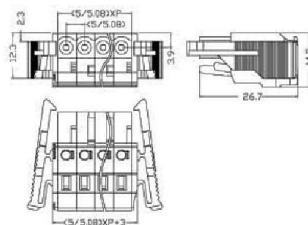


<b>Dimensions</b>		
Poles:	(2P-24P)	
Pitch:	5.0mm(.197"), 5.08mm(.200")	

<b>Electrical</b>		
Standard:	UL	IEC
Voltage Rating:	300V	320V
Current Rating:	15A	20A
Wire range:	22-14AWG 2.5mm <sup>2</sup>	
Withstand voltage	AC2500V/Min	

<b>Mechanical</b>		
Ambient temperature	-40°C~+105°C	
Strip length	7-8mm	

<b>Material</b>		
Housing:	PA66(UL 94V-0)	
Contact:	Phosphor Bronze	
Wire guard:	Stainless steel	



## XY2505FG-7.5 XY2505FG-7.62

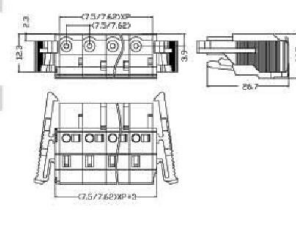


<b>Dimensions</b>		
Poles:	(2P-12P)	
Pitch:	7.5mm(.295") 7.62mm(.300")	

<b>Electrical</b>		
Standard:	UL	IEC
Voltage Rating:	300V	320V
Current Rating:	15A	20A
Wire range:	22-14AWG 2.5mm <sup>2</sup>	
Withstand voltage	AC2500V/Min	

<b>Mechanical</b>		
Ambient temperature	-40°C~+105°C	
Strip length	7-8mm	

<b>Material</b>		
Housing:	PA66(UL 94V-0)	
Contact:	Phosphor Bronze	
Wire guard:	Stainless steel	



## XY2505FR-5.0 XY2505FR-5.08

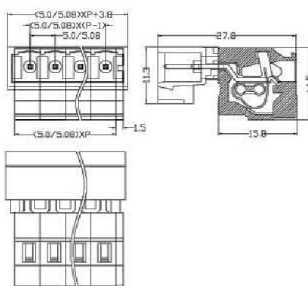


<b>Dimensions</b>		
Poles:	(2P-22P)	
Pitch:	5.0mm(.197"), 5.08mm(.200")	

<b>Electrical</b>		
Standard:	UL	IEC
Voltage Rating:	300V	320V
Current Rating:	15A	20A
Wire range:	22-14AWG 0.2-2.5mm <sup>2</sup>	
Withstand voltage	AC2500V/Min	

<b>Mechanical</b>		
Ambient temperature	-40°C~+105°C	
Strip length	7-8mm	

<b>Material</b>		
Housing:	PA66(UL 94V-0)	
Contact:	Red copper	
Wire guard:	Stainless steel	



## XY2505FR-7.5 XY2505FR-7.62

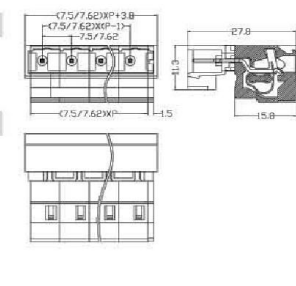


<b>Dimensions</b>		
Poles:	(2P-12P)	
Pitch:	7.5mm(.295") 7.62mm(.300")	

<b>Electrical</b>		
Standard:	UL	IEC
Voltage Rating:	300V	400V
Current Rating:	15A	20A
Wire range:	22-14AWG 2.5mm <sup>2</sup>	
Withstand voltage	AC2500V/Min	

<b>Mechanical</b>		
Ambient temperature	-40°C~+105°C	
Strip length	7-8mm	

<b>Material</b>		
Housing:	PA66(UL 94V-0)	
Contact:	Red copper	
Wire guard:	Stainless steel	



## XY2505FMA-5.0 XY2505FMA-5.08

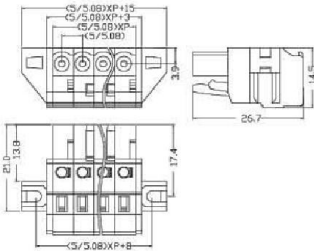


<b>Dimensions</b>		
Poles:	(2P-24P)	
Pitch:	5.0mm(.197"), 5.08mm(.200")	

<b>Electrical</b>		
Standard:	UL	IEC
Voltage Rating:	300V	320V
Current Rating:	15A	20A
Wire range:	22-14AWG 2.5mm <sup>2</sup>	
Withstand voltage	AC2500V/Min	

<b>Mechanical</b>		
Ambient temperature	-40°C~+105°C	
Strip length	7-8mm	

<b>Material</b>		
Housing:	PA66(UL 94V-0)	
Contact:	Phosphor Bronze	
Wire guard:	Stainless steel	



## XY2505FMA-7.5 XY2505FMA-7.62

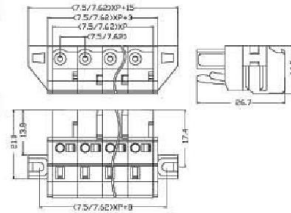


<b>Dimensions</b>		
Poles:	(2P-12P)	
Pitch:	7.5mm(.295") 7.62mm(.300")	

<b>Electrical</b>		
Standard:	UL	IEC
Voltage Rating:	300V	400V
Current Rating:	15A	20A
Wire range:	22-14AWG 2.5mm <sup>2</sup>	
Withstand voltage	AC2500V/Min	

<b>Mechanical</b>		
Ambient temperature	-40°C~+105°C	
Strip length	7-8mm	

<b>Material</b>		
Housing:	PA66(UL 94V-0)	
Contact:	Phosphor Bronze	
Wire guard:	Stainless steel	



## XY2505FMB-5.0 XY2505FMB-5.08

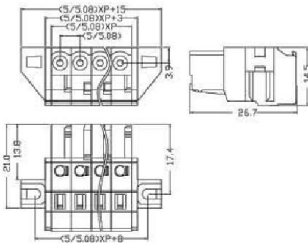


<b>Dimensions</b>		
Poles:	(2P-24P)	
Pitch:	5.0mm(.197"), 5.08mm(.200")	

<b>Electrical</b>		
Standard:	UL	IEC
Voltage Rating:	300V	320V
Current Rating:	15A	20A
Wire range:	22-14AWG 2.5mm <sup>2</sup>	
Withstand voltage	AC2500V/Min	

<b>Mechanical</b>		
Ambient temperature	-40°C~+105°C	
Strip length	7-8mm	

<b>Material</b>		
Housing:	PA66(UL 94V-0)	
Contact:	Phosphor Bronze	
Wire guard:	Stainless steel	



## XY2505FMB-7.5 XY2505FMB-7.62

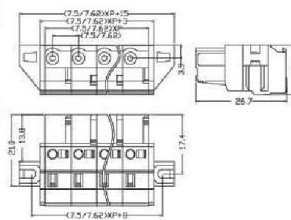


<b>Dimensions</b>		
Poles:	(2P-12P)	
Pitch:	7.5mm(.295") 7.62mm(.300")	

<b>Electrical</b>		
Standard:	UL	IEC
Voltage Rating:	300V	400V
Current Rating:	15A	20A
Wire range:	22-14AWG 2.5mm <sup>2</sup>	
Withstand voltage	AC2500V/Min	

<b>Mechanical</b>		
Ambient temperature	-40°C~+105°C	
Strip length	7-8mm	

<b>Material</b>		
Housing:	PA66(UL 94V-0)	
Contact:	Phosphor Bronze	
Wire guard:	Stainless steel	



## XY2505FMC-5.0 XY2505FMC-5.08

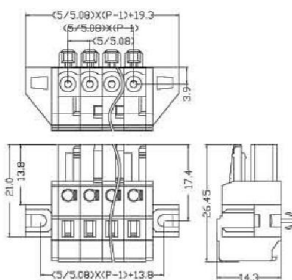


<b>Dimensions</b>		
Poles:	(2P-24P)	
Pitch:	5.0mm(.197"), 5.08mm(.200")	

<b>Electrical</b>		
Standard:	UL	IEC
Voltage Rating:	300V	320V
Current Rating:	15A	20A
Wire range:	22-14AWG 2.5mm <sup>2</sup>	
Withstand voltage	AC2500V/1Min	

<b>Mechanical</b>		
Ambient temperature	-40°C~+105°C	
Strip length	7-8mm	

<b>Material</b>		
Housing:	PA66(UL 94V-0)	
Contact:	Phosphor Bronze	
Wire guard:	Stainless steel	



## XY2505FMC-7.5 XY2505FMC-7.62

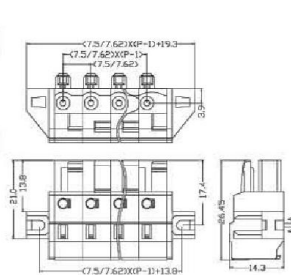


<b>Dimensions</b>		
Poles:	(2P-12P)	
Pitch:	7.5mm(.295") 7.62mm(.300")	

<b>Electrical</b>		
Standard:	UL	IEC
Voltage Rating:	300V	400V
Current Rating:	15A	20A
Wire range:	22-14AWG 2.5mm <sup>2</sup>	
Withstand voltage	AC2500V/1Min	

<b>Mechanical</b>		
Ambient temperature	-40°C~+105°C	
Strip length	7-8mm	

<b>Material</b>		
Housing:	PA66(UL 94V-0)	
Contact:	Phosphor Bronze	
Wire guard:	Stainless steel	





# Plug-in Terminal Block

## XY2505VC-5.0 XY2505VC-5.08

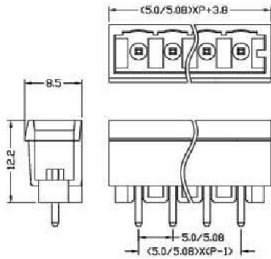


<b>Dimensions</b>		
Poles:	(2P-24P)	
Pitch:	5.0mm(.197"), 5.08mm(.200")	

<b>Electrical</b>		
Standard:	UL	IEC
Voltage Rating:	300V	320V
Current Rating:	15A	20A
Withstand voltage	AC2500V/Min	

<b>Mechanical</b>	
Ambient temperature	-40°C~+105°C

<b>Material</b>	
Housing:	PA66(UL 94V-0)
Pin header:	Brass, Tin Plated



## XY2505VC-7.5 XY2505VC-7.62

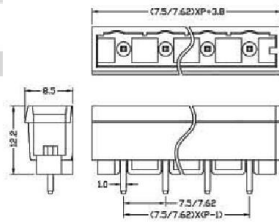


<b>Dimensions</b>		
Poles:	(2P-12P)	
Pitch:	7.5mm(.295") 7.62mm(.300")	

<b>Electrical</b>		
Standard:	UL	IEC
Voltage Rating:	300V	400V
Current Rating:	15A	20A
Withstand voltage	AC2500V/Min	

<b>Mechanical</b>	
Ambient temperature	-40°C~+105°C

<b>Material</b>	
Housing:	PA66(UL 94V-0)
Pin header:	Brass, Tin Plated



## XY2505FRB-5.0 XY2505FRB-5.08

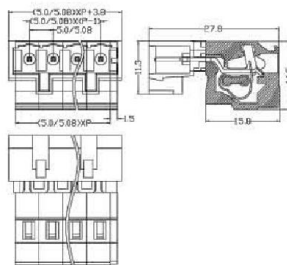


<b>Dimensions</b>		
Poles:	(2P-24P)	
Pitch:	5.0mm(.197"), 5.08mm(.200")	

<b>Electrical</b>		
Standard:	UL	IEC
Voltage Rating:	300V	320V
Current Rating:	15A	20A
Wire range:	22-14AWG 2.5mm <sup>2</sup>	
Withstand voltage	AC2500V/Min	

<b>Mechanical</b>	
Ambient temperature	-40°C~+105°C
Strip length	7-8mm

<b>Material</b>	
Housing:	PA66(UL 94V-0)
Contact:	Phosphor Bronze
Wire guard:	Stainless steel



## XY2505RCB-5.0 XY2505RCB-5.08

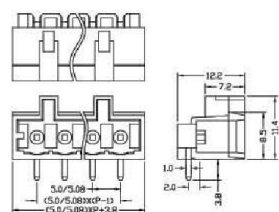


<b>Dimensions</b>		
Poles:	(2P-24P)	
Pitch:	5.0mm(.197"), 5.08mm(.200")	

<b>Electrical</b>		
Standard:	UL	IEC
Voltage Rating:	300V	320V
Current Rating:	15A	20A
Withstand voltage	AC2500V/Min	

<b>Mechanical</b>	
Ambient temperature	-40°C~+105°C

<b>Material</b>	
Housing:	PA66(UL 94V-0)
Pin header:	Red copper, Tin Plated



## XY2505RCB-7.5 XY2505RCB-7.62

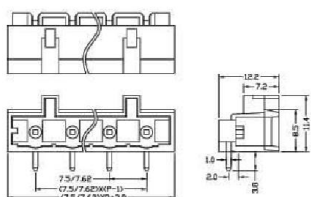


<b>Dimensions</b>		
Poles:	(2P-12P)	
Pitch:	7.5mm(.295") 7.62mm(.300")	

<b>Electrical</b>		
Standard:	UL	IEC
Voltage Rating:	300V	400V
Current Rating:	15A	20A
Withstand voltage	AC2500V/Min	

<b>Mechanical</b>	
Ambient temperature	-40°C~+105°C

<b>Material</b>	
Housing:	PA66(UL 94V-0)
Pin header:	Red copper, Tin Plated



## XY2505VCB-5.0 XY2505VCB-5.08

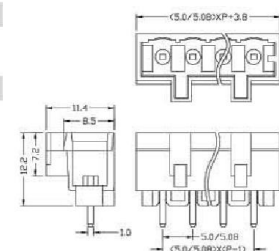


<b>Dimensions</b>		
Poles:	(2P-24P)	
Pitch:	5.0mm(.197"), 5.08mm(.200")	

<b>Electrical</b>		
Standard:	UL	IEC
Voltage Rating:	300V	320V
Current Rating:	15A	20A
Withstand voltage	AC2500V/Min	

<b>Mechanical</b>	
Ambient temperature	-40°C~+105°C

<b>Material</b>	
Housing:	PA66(UL 94V-0)
Pin header:	Red copper, Tin Plated



## XY2505VCB-7.5 XY2505VCB-7.62

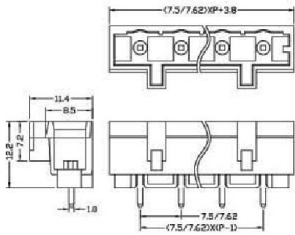


**Dimensions**  
 Poles: (2P-24P)  
 Pitch: 7.5mm(.295") 7.62mm(.300")

**Electrical**  
 Standard: UL IEC  
 Voltage Rating: 300V 400V  
 Current Rating: 15A 20A  
 Withstand voltage AC2500V/Min

**Mechanical**  
 Ambient temperature -40°C~+105°C

**Material**  
 Housing: PA66(UL 94V-0)  
 Pin header: Red copper, Tin Plated



## XY2505RMB-5.0 XY2505RMB-5.08

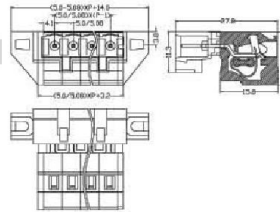


**Dimensions**  
 Poles: (2P-24P)  
 Pitch: 5.0mm(.197"), 5.08mm(.200")

**Electrical**  
 Standard: UL IEC  
 Voltage Rating: 300V 320V  
 Current Rating: 15A 20A  
 Wire range: 22-14AWG 2.5mm<sup>2</sup>  
 Withstand voltage AC2500V/Min

**Mechanical**  
 Ambient temperature -40°C~+105°C  
 Strip length 7-8mm

**Material**  
 Housing: PA66(UL 94V-0)  
 Contact: Phosphor Bronze  
 Wire guard: Stainless steel



## XY2505RMB-7.5 XY2505RMB-7.62

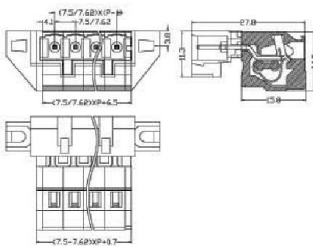


**Dimensions**  
 Poles: (2P-24P)  
 Pitch: 7.5mm(.295") 7.62mm(.300")

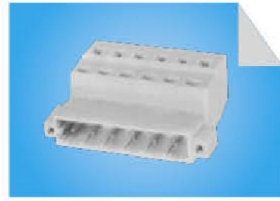
**Electrical**  
 Standard: UL IEC  
 Voltage Rating: 300V 320V  
 Current Rating: 15A 20A  
 Wire range: 22-14AWG 2.5mm<sup>2</sup>  
 Withstand voltage AC2500V/Min

**Mechanical**  
 Ambient temperature -40°C~+105°C  
 Strip length 7-8mm

**Material**  
 Housing: PA66(UL 94V-0)  
 Contact: Phosphor Bronze  
 Wire guard: Stainless steel



## XY2505FRP-5.0 XY2505FRP-5.08

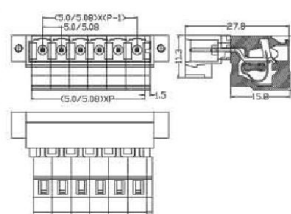


**Dimensions**  
 Poles: (2P-22P)  
 Pitch: 5.0mm(.197"), 5.08mm(.200")

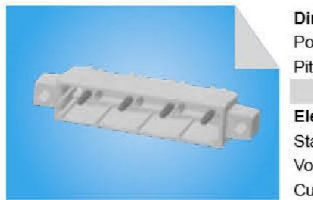
**Electrical**  
 Standard: UL IEC  
 Voltage Rating: 300V 320V  
 Current Rating: 15A 20A  
 Wire range: 22-14AWG 2.5mm<sup>2</sup>  
 Withstand voltage AC2500V/Min

**Mechanical**  
 Ambient temperature -40°C~+105°C  
 Strip length 8-9mm

**Material**  
 Housing: PA66(UL 94V-0)  
 Contact: Red copper  
 Wire guard: Stainless steel



## XY2505RMA-7.5 XY2505RMA-7.62

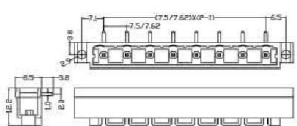


**Dimensions**  
 Poles: (2P-12P)  
 Pitch: 7.5mm(.295") 7.62mm(.300")

**Electrical**  
 Standard: UL IEC  
 Voltage Rating: 300V 400V  
 Current Rating: 15A 20A  
 Withstand voltage AC2500V/Min

**Mechanical**  
 Ambient temperature -40°C~+105°C

**Material**  
 Housing: PA66(UL 94V-0)  
 Pin header: Brass, Tin Plated



## XY2505RMA-5.0 XY2505RMA-5.08

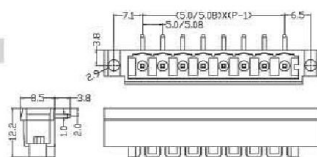


**Dimensions**  
 Poles: (2P-24P)  
 Pitch: 5.0mm(.197"), 5.08mm(.200")

**Electrical**  
 Standard: UL IEC  
 Voltage Rating: 300V 320V  
 Current Rating: 15A 20A  
 Withstand voltage AC2500V/Min

**Mechanical**  
 Ambient temperature -40°C~+105°C

**Material**  
 Housing: PA66(UL 94V-0)  
 Pin header: Brass, Tin Plated





# Plug-in Terminal Block

## XY2505RM-5.0 XY2505RM-5.08

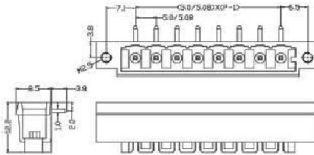


**Dimensions**  
 Poles: (2P-22P)  
 Pitch: 5.0mm(.197"), 5.08mm(.200")

**Electrical**  
 Standard: UL IEC  
 Voltage Rating: 300V 320V  
 Current Rating: 15A 20A  
 Withstand voltage: AC2500V/Min

**Mechanical**  
 Ambient temperature -40°C~+105°C

**Material**  
 Housing: PA66(UL 94V-0)  
 Pin header: Brass, Tin Plated M2.5, Brass



## XY2505VMA-5.0 XY2505VMA-5.08

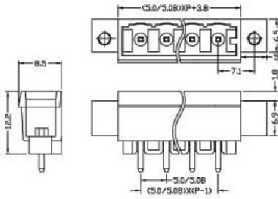


**Dimensions**  
 Poles: (2P-24P)  
 Pitch: 5.0mm(.197"), 5.08mm(.200")

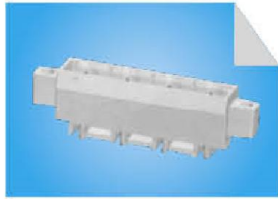
**Electrical**  
 Standard: UL IEC  
 Voltage Rating: 300V 320V  
 Current Rating: 15A 20A  
 Withstand voltage: AC2500V/Min

**Mechanical**  
 Ambient temperature -40°C~+105°C

**Material**  
 Housing: PA66(UL 94V-0)  
 Pin header: Brass, Tin Plated



## XY2505VMA-7.5 XY2505VMA-7.62

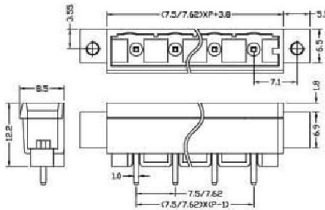


**Dimensions**  
 Poles: (2P-24P)  
 Pitch: 7.5mm(.295") 7.62mm(.300")

**Electrical**  
 Standard: UL IEC  
 Voltage Rating: 300V 400V  
 Current Rating: 15A 20A  
 Withstand voltage: AC2500V/Min

**Mechanical**  
 Ambient temperature -40°C~+105°C

**Material**  
 Housing: PA66(UL 94V-0)  
 Pin header: Brass, Tin Plated



## XY009



## XY010

